

Canine Brucella Antibody Rapid Test (C.Brucella Ab)

Catalog No.: JCA007D

◇ INTENDED USE

The Canine Brucella Antibody Rapid Test is a lateral flow immunochromatographic assay for the qualitative detection of Canine Brucella Antibody (C.Brucella Ab) in dog's serum, plasma, or whole blood.

Assay Time: 5-10 minutes

Specimen: serum, plasma, or whole blood.

◇ PRINCIPLE

The Canine Brucella Antibody Rapid Test is based on sandwich lateral flow immunochromatographic assay. The test device has a testing window for the observation of assay running and result reading. The testing window has an invisible T (test) zone and a C (control) zone before running the assay. When the treated sample was applied into the sample hole on the device, the liquid will laterally flow through the surface of the test strip and react with the pre-coated Brucella LPS antigens. If there are anti-Brucella antibodies in the specimen, a visible T line will appear. The C line should always appear after a sample is applied, which indicates a valid result. By this means, the device can accurately indicate the presence of Canine Brucella antibodies in the specimen.

◇ REAGENTS AND MATERIALS

- Test devices
- Disposable droppers
- Assay buffer
- Products Manual

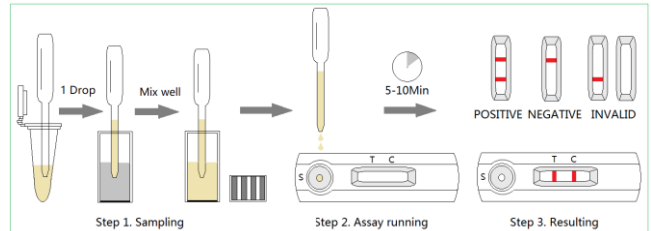
◇ STORAGE AND STABILITY

The kit can be stored at room temperature (4-30°C). The test kit is stable through the expiration date (24 months) marked on the package label. DO NOT FREEZE. Do not store the test kit in direct sunlight.

◇ TEST PROCEDURE

- Collect dog's fresh whole blood, serum or plasma specimen for use. Immediately apply the testing once collected the specimen.
- Take out the test device from the foil pouch and place it horizontally.
- Place 1 drop (approx. 20µL) of serum or plasma specimen into an assay buffer tube. Mix well and directly use in the assay.

- Place 2-3 drops (approx. 60-80µL) of assay buffer into the sample hole.
- Interpret the result in 5-10 minutes. Result after 10 minutes is considered as invalid.



◇ INTERPRETATION OF RESULTS

Positive: The presence of both "C" line and zone "T" line, no matter T line is clear or vague.

Negative: Only clear C line appear. No T line.

Invalid: No colored line appears in C zone. No matter if T line appears.

◇ PRECAUTIONS

- All reagents must be at room temperature before running the assay.
- Do not remove test cassette from its pouch until immediately before use.
- Do not use the test beyond its expiration date.
- The components in this kit have been quality control tested as standard batch unit. Do not mix components from different lot numbers.
- All specimens are of potential infection. It must be strictly treated according to the rules and regulations by local states.

◇ LIMITATION

Canine Brucella Antibody Rapid Test is for in vitro veterinary diagnosis use only. All result should be considered with other clinical information available with veterinarian. It is suggested to apply a further confirmative method when positive result was observed.



J&G Biotech Ltd (Reg. No.: 08419172)

326 Cleveland Road, London, England E18 2AN, UK